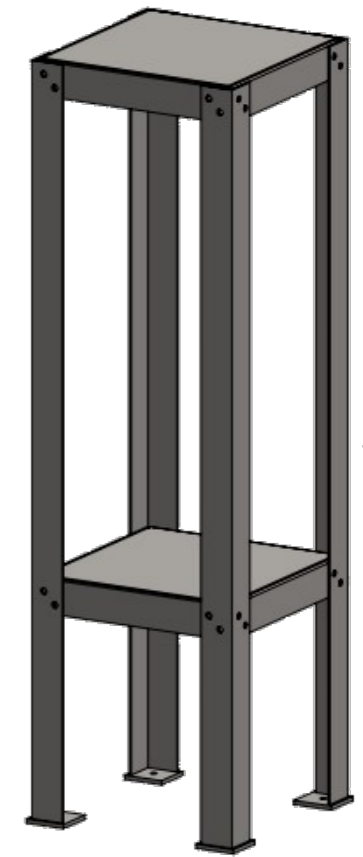


Pedestal Cabinet Product Manual

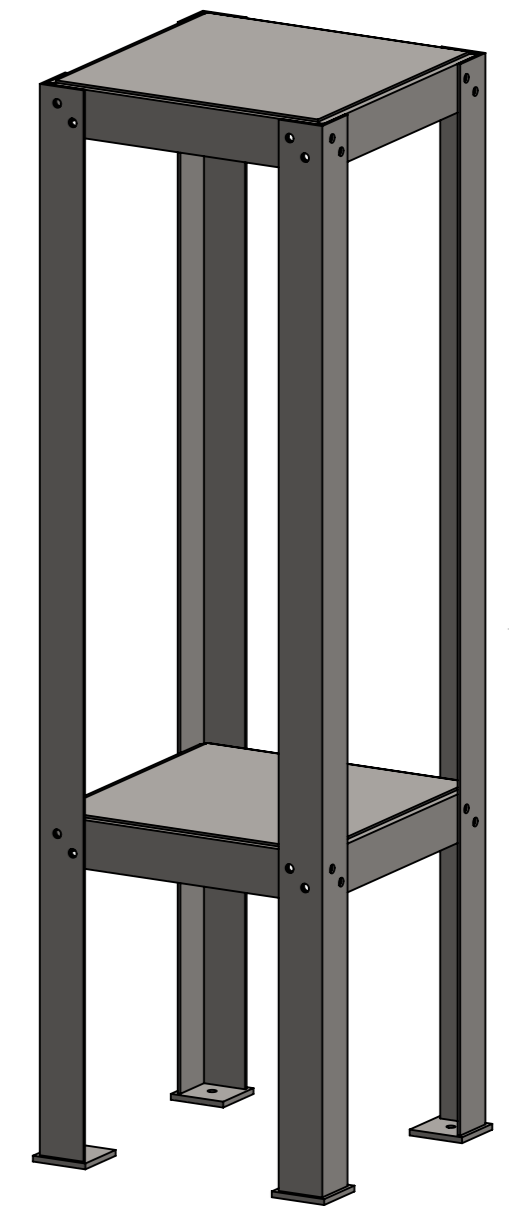
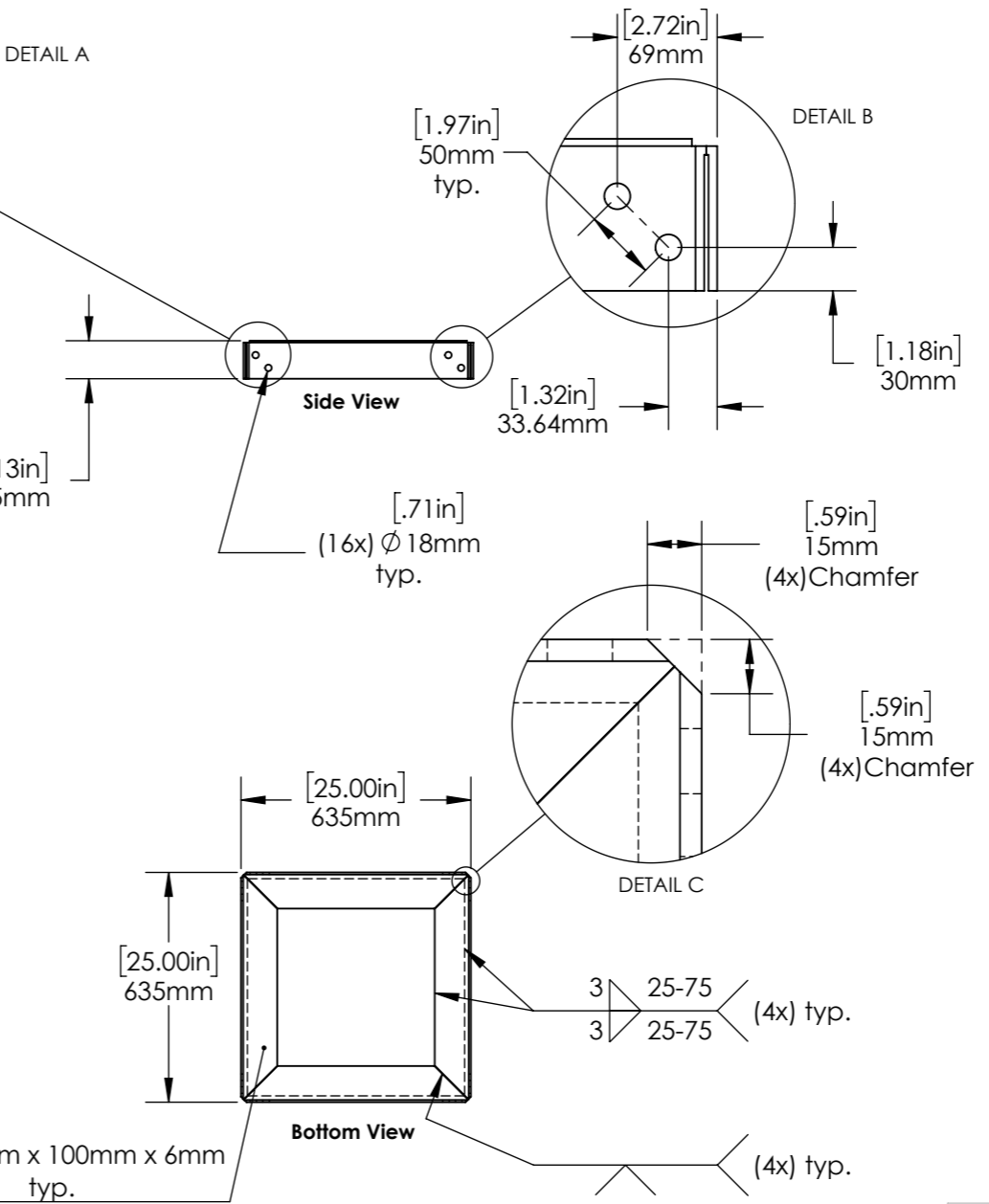
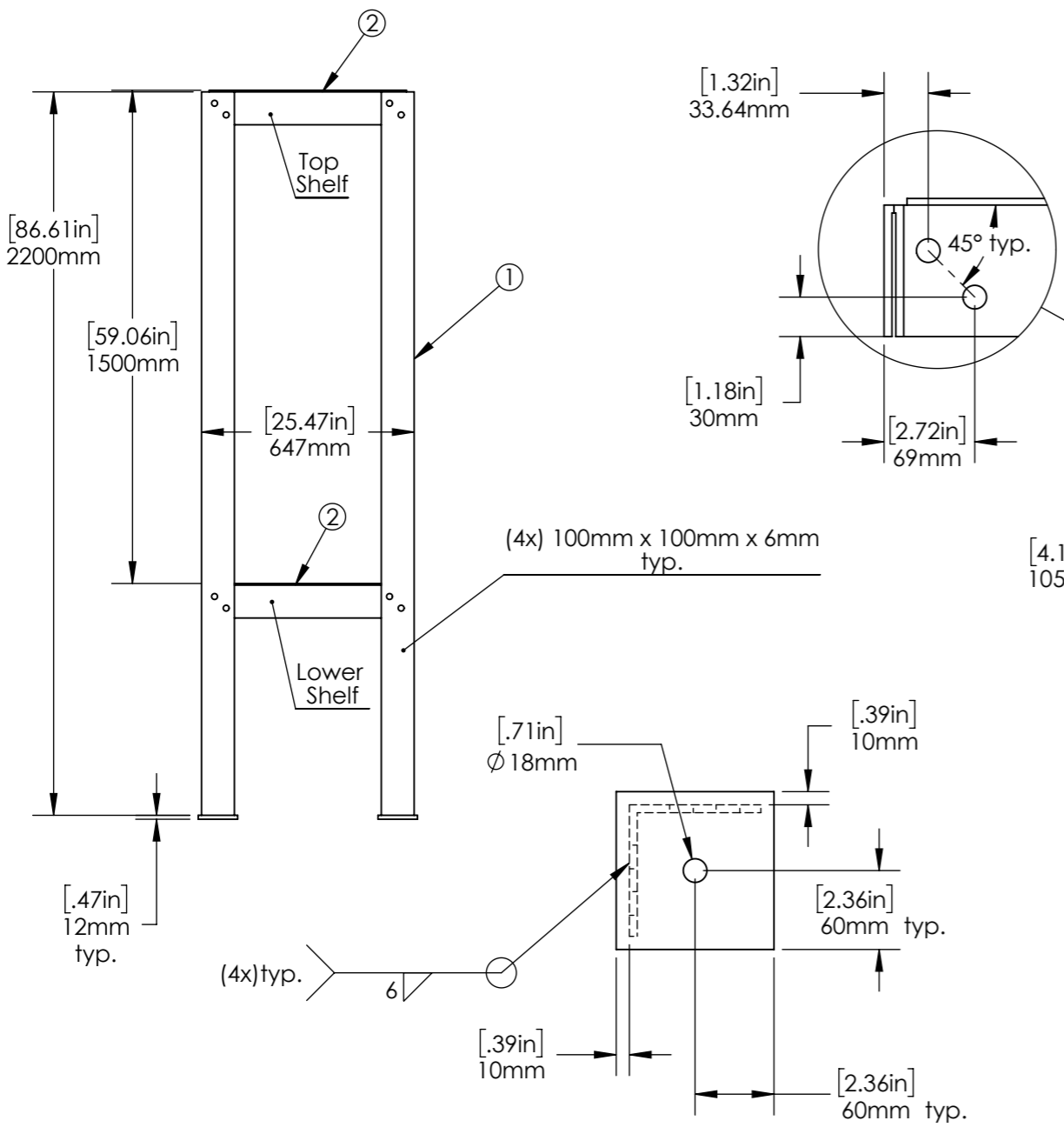
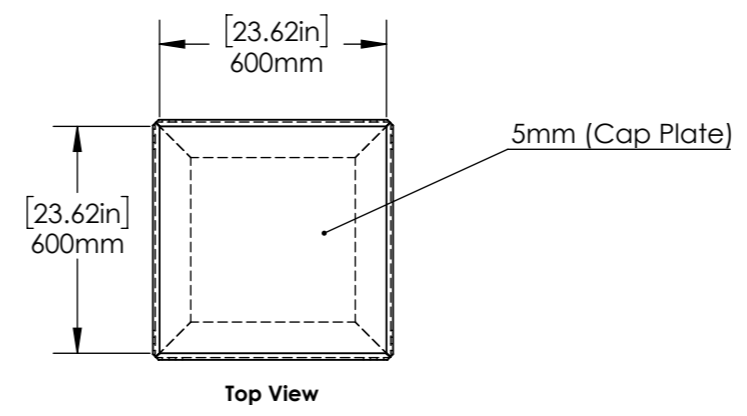


Pedestal Cabinet

Proprietary rights are included in the information disclosed herein. This information is submitted in confidence and neither the document nor the information disclosed here in shall be reproduced or transferred to other documents for manufacturing or for any other purpose except as specifically authorized in writing by ARE Telecom, Broadband & Wind.

REVISIONS			
REV.	DESCRIPTION	DATE	APPROVED
A	initial release	9/29/22	MGC

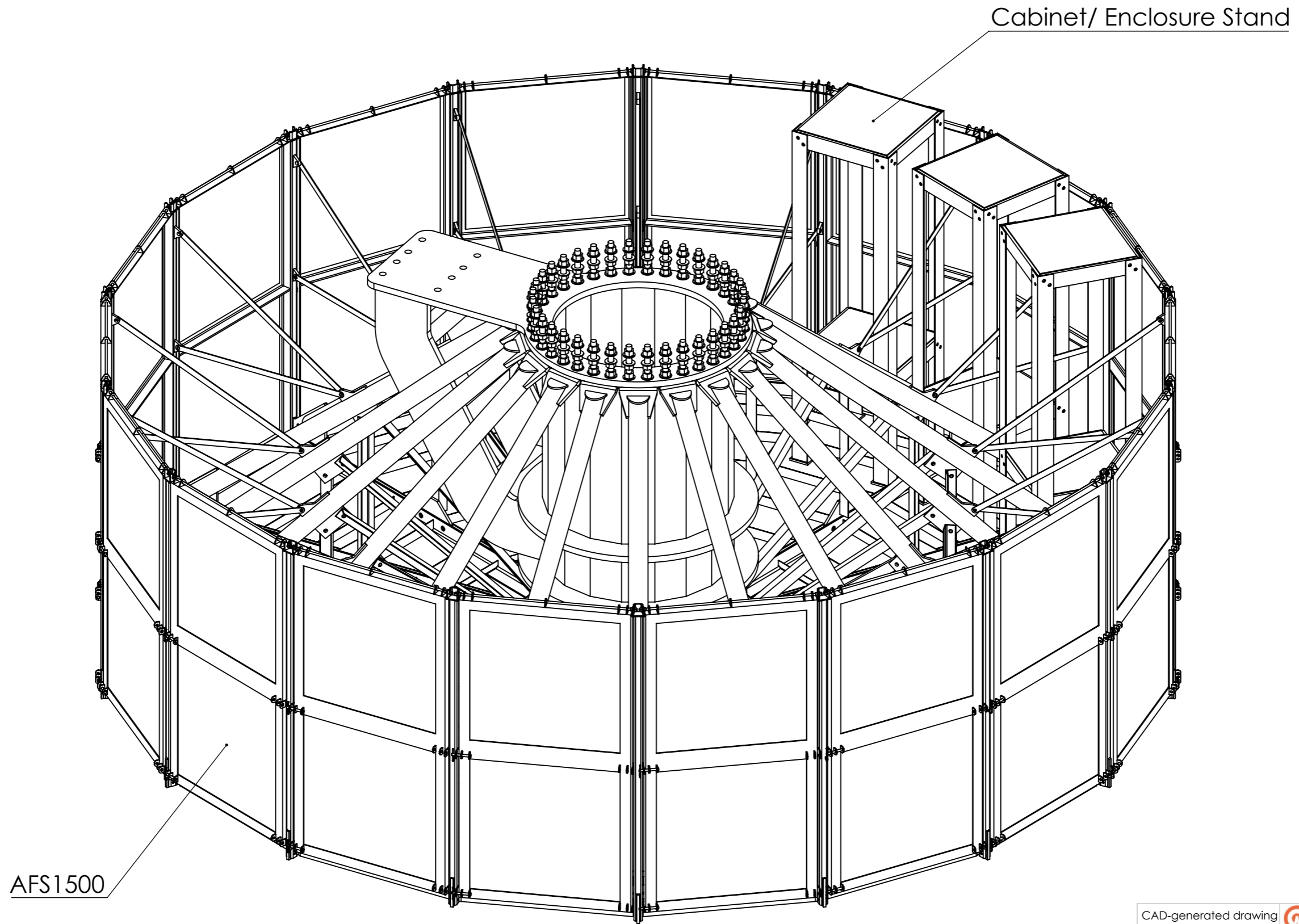
#	DESCRIPTION	QTY	Weight (lb/ kg)
1	100mm x 100mm x6mm Right Angle	4	1.2/ 0.54
2	Shelf Weldment	2	0.88/ 0.64
3	Hex Bolt M16x2 x 50mm - GR 8.8 HDG w/ (2x) Washer, (1x) Nut	36	





- Notes:**
- All material shall have a minimum yield strength of 235 MPa (36 ksi)
 - All welding shall conform to the minimum requirements of CWB/ AWS D1.1
 - All welding shall be done by welders qualified under CWB/ AWS specifications, using E70XX, low hydrogen electrodes
 - Components shall be Hot Dip Galvanized in accordance with ASTM A123
 - Cabinet mounting holes shall be field drilled thru cap plate
 - Debur all sharp edges

Steel Weight 156 kg (344 lbs) Does not include anchor bolts, templates or flange bolts	APPROVALS	DATE	 1041 Grand Ave., #213 St. Paul, MN 55105 (651) 330-1263 www.aretelcom.com
	DRAWN MGC	9/29/22	
MATERIAL See Notes FINISH See Notes	CHECKED		Cabinet/ Enclosure Stand AFS1100 to AFS3000 CAD file : Details and dimensions not shown on this drawing can be found in CAD file
	RESP ENG		
DO NOT SCALE DRAWING	MFG ENG		scale NA rev. A size NA sheet 1 of 2
	QUAL ENG		

Proprietary rights are included in the information disclosed herein. This information is submitted in confidence and neither the document nor the information disclosed here in shall be reproduced or transferred to other documents for manufacturing or for any other purpose except as specifically authorized in writing by ARE Telecom, Broadband & Wind.



CAD-generated drawing do not manually update		 1041 Grand Ave., #213 St. Paul, MN 55105 (651) 330-1263 www.aretelcom.com
APPROVALS	DATE	
DRAWN MGC	9/29/22	Cabinet/ Enclosure Stand AFS1100 to AFS3000 CAD file : Details and dimensions not shown on this drawing can be found in CAD file
CHECKED		
RESP ENG		
MATERIAL See Notes	MFG ENG	 scale NA rev. A size NA sheet 2 of 2
FINISH See Notes	QUAL ENG	
DO NOT SCALE DRAWING		

Images

